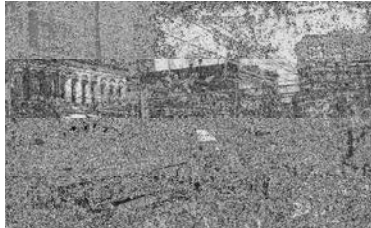




Since 1919 the Broome County Historical Society has been collecting, preserving and interpreting the history of our area. The generosity of our membership has helped the society engage in five major areas and many activities, including:



Parade for the  
Binghamton Fair, circa. 1910

### ***Programs***

Nine regular programs each year, as well as special lectures, workshops and trips.

### ***Publications***

Two issues of our newsletter, *Broome County History Bulletin*, published each year. Scholarly and popular books on our area's history such as civil war letters in *This From George* and vignettes from Binghamton in the late 1800's in *Ogden's Observations*.

### ***Collections***

The society maintains a collection of over 100,000 items covering our area from pre-history to the present. We have preserved these items by using

current museum and archival standards. The society added nearly 1000 items in 2002.

### ***Library***

The BCHS is a major participant in the Local History & Genealogy Center in the Broome County Public Library. Over 38,000 people have visited the Center since it opened in December 2000. A collection of over 5,000 books, 4,000 manuscripts, 75,000 photographic images, 50,000 clippings, 150,000 obituaries, and an index of 225,000 names are maintained in the Local History & Genealogy Center.

### ***Exhibits***

Using items from the society's collections, as well as others, we have held many exhibits for residents and visitors to enjoy. Recent exhibits include *Answering the Call: Two Centuries of Broome County Firefighting* and *Celebrating Many Lands*. Exhibits can be viewed at the Local History & Genealogy Center at the Broome County Public Library, the Binghamton Visitors Center, the Endicott Visitors Center (both part of the Susquehanna Heritage Area), and the Local History Gallery at Roberson Museum and Science Center.

Members of the BCHS receive 10% off any BCHS publication. Members also pay half the cost of research (\$5.00/hour instead of \$10/hour). Your membership dollars helps us to continue our valuable work.



Bird's eye view of Binghamton, circa 1920

### ***Membership Application***

To become a member of the Broome County Historical Society, fill out the form below. Check one of the following:

- \_\_\_ \$20.00 Individual
- \_\_\_ \$50.00 Sustaining Individual
- \_\_\_ \$30.00 Family
- \_\_\_ \$75.00 Sustaining Family
- \_\_\_ \$10.00 Student (K-12)
- \_\_\_ \$100+ Corporate
- \_\_\_ \$100-\$499 Patron
- \_\_\_ \$500-\$999 Benefactor
- \_\_\_ \$1000+ Memorial

To become a member of the Broome County Historical Society *and* the Roberson Museum and Science Center, fill out the form below. Check one of the following:

- \_\_\_ \$40.00 Single membership
- \_\_\_ \$65.00 Family membership

Name \_\_\_\_\_

Address \_\_\_\_\_

Telephone # \_\_\_\_\_

E-mail: \_\_\_\_\_

Send this form to:

**Broome County Historical Society**  
185 Court St.  
Binghamton, NY 13901-3503